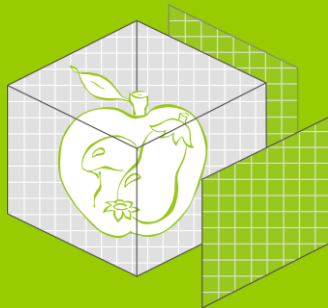




O<sub>2</sub> CO<sub>2</sub> Gas Analyzer  
"Tiempo Test Silver"



## Tiempo Test Silver – O<sub>2</sub> CO<sub>2</sub> Gas Analyzer to monitor the storage conditions in JMT CA bins

### Functions



- 1- **ON button:** to turn it on.
- 2- Wait until the measurements are displayed.

Options for setting time/date and calibration.

**OFF button:** Return to main menu  
(hold in for 2 seconds to turn it off)



About the charger, the charging circuit & the battery  
After connecting the charger cable:

- Charger light on → All OK!
- Charger light off → Defective charger

### Specifications

#### General specifications:

Size (mm): 91 x 106 x 187  
Storage temp.: 68°F / 20°C  
Weight: 1.3 lbs / 0.6 Kg  
Gas: O<sub>2</sub>, CO<sub>2</sub>, and mix of no combustible gas, no toxic gas, and no corrosive gas  
Gas entry pressure: max. 0.3 bar  
Samples size: 12 to 14 mL  
Sampling duration: 10 seconds  
Autonomy: 250 measures per charge

#### O<sub>2</sub> Analysis:

Probe: Electrochemical cell.  
Measure: 0...100 Vol.-%  
Accuracy: 0.1% absolute for concentrations of O<sub>2</sub> < 10% Vol.-%  
Replaceable sensor.

#### CO<sub>2</sub> Analysis:

Probe: Infrared sensor.  
Measure: 0...100 Vol.-%  
Accuracy: +/- 2% PE at 68°F  
Calibration: 2 calibration points (point zero & high point).  
Pressure used (g): atmospheric pressure.

### Maintenance & Calibration

#### Maintenance of the filter and needles:

Check that the air flow passes through the needle and that it is not blocked. The needle can be cleaned after taking several measurements using the metal rod in the needle pouch.

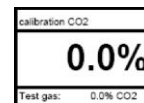
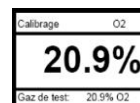
#### When to recalibrate the Tiempo Test?

The unit must be recalibrated when exposed to major changes in the environmental conditions (temperature for example) in order to avoid incorrect measurements.

*O<sub>2</sub> is calibrated at 20.9% with well ventilated ambient air*

*CO<sub>2</sub> is calibrated at 0%*

Press several times to display the window:



Then press to start the calibration.

Press to return to the main menu.

*(0% O<sub>2</sub> and 100% CO<sub>2</sub> calibration points may be carried out with a 100% CO<sub>2</sub> bottle.)*